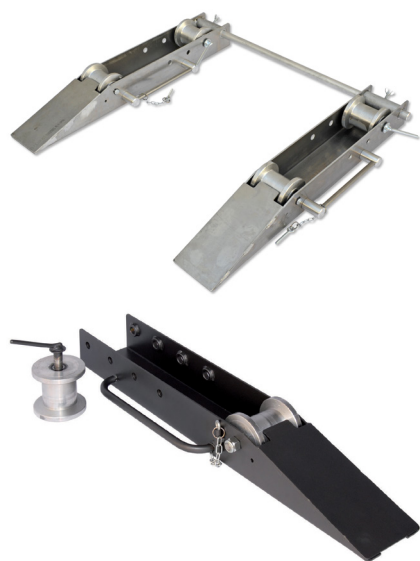


Double Unrolling Base for Reels

Description

Arvi's double unwinder base for reel are designed to facilitate cable unwinding. They are equipped with bearings that ensure smooth movement and a braking system for increased stability. Compact and adjustable, they are suitable for applications in electrical and telecommunications installations.



Product Specifications

MATERIAL	MECHANISM	LOAD CAPACITY (kg)	Ø REEL (mm)	DIMENSIONS (mm)
Galvanized Steel	Rolling Bearings	1000	400-1000	950x145x110
Aluminum	Rolling Bearings	1000	400-1000	950x145x110

Logistics Information

CODE	REFERENCE	UNIT WEIGHT (kg)	QUANTITY (un)	SALES MULTIPLE (un)
7081310023	SDA1000	15	2	2
7081310024	SDAL1000	10,5	2	2